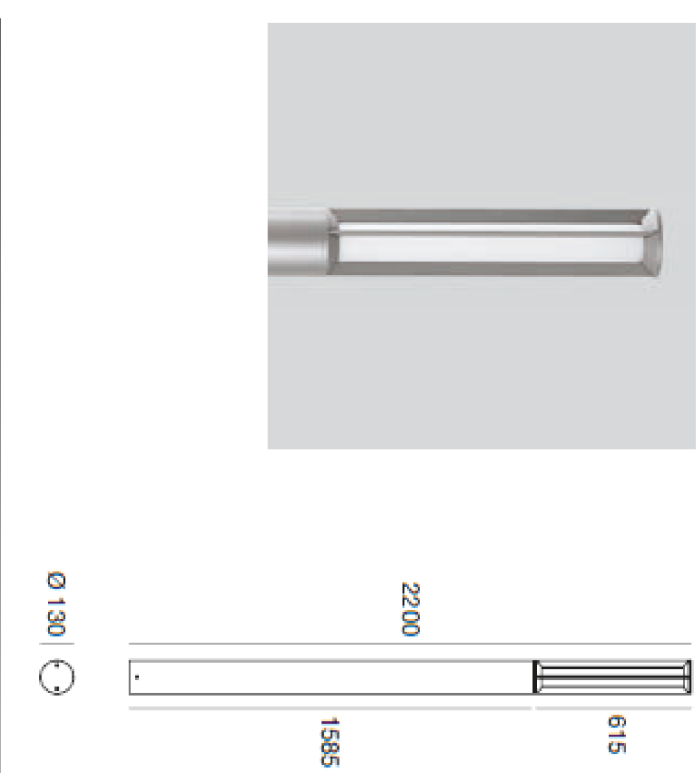




IL GRUPPO Geom. Stefano Cappello	IL PROGETTISTA Arch. Di Stefano Nannetti	FEBBRAIO 2020
IL DIRIGENTE Ing. Giovanni Pines	IL SINDACO Carlo SALVINI	ASSESSORE ALL'OP. Ing. Alessandro DELL'UCCI

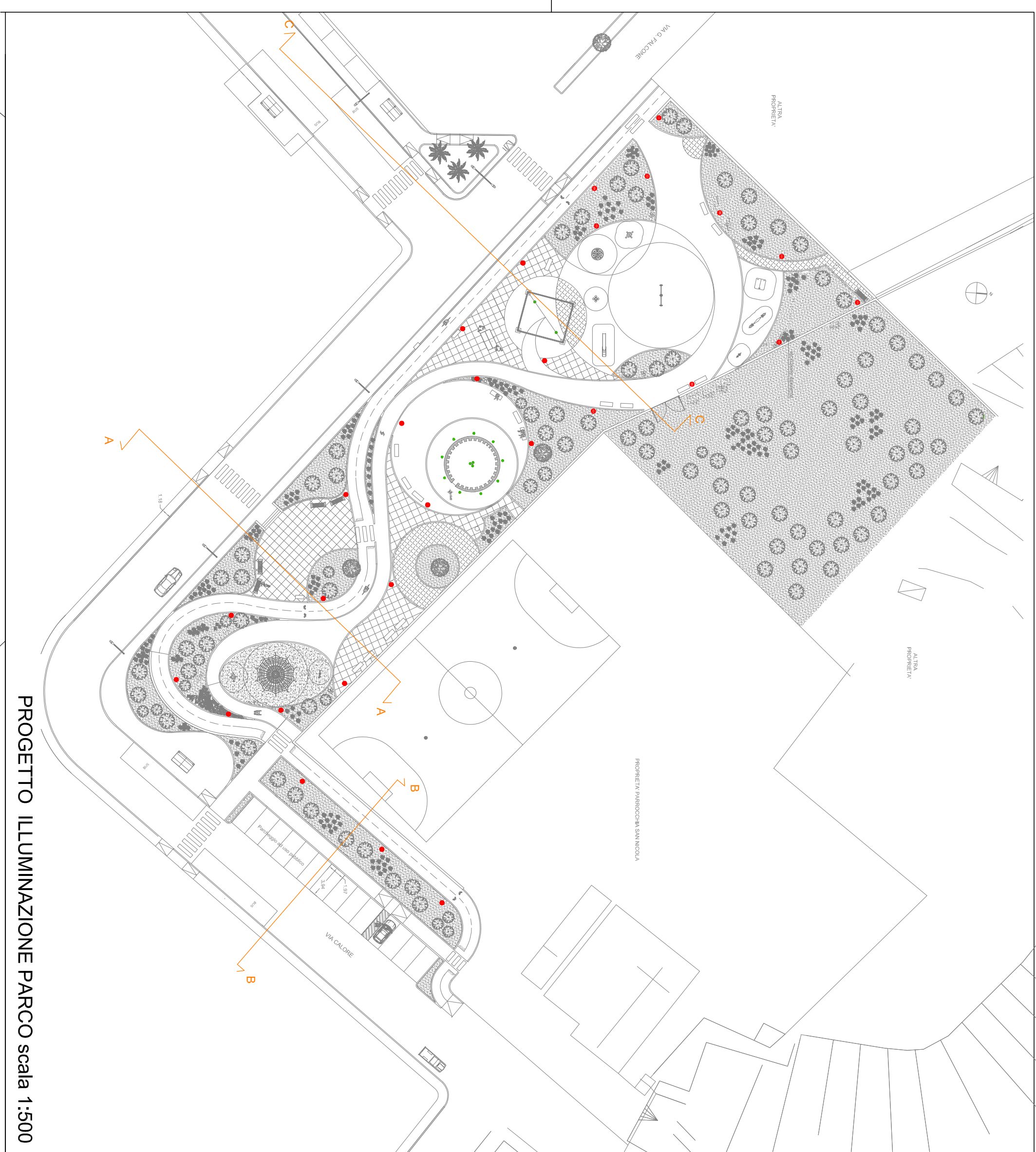
PARTICOLARI PUNTI LUCE  
PREVISTI IN PROGETTO



Simbolo		
Prodotto:	PILUS_X BOLLARD 220-240V-24V-60074N	N° App: 28

Simbolo		Prodotto: SUELO_SPOTLIGHT 220V 8W - 94007W60	N° Acq. 14
---------	---	---	---------------

## PLANIMETRIA DI PROGETTO scala 1:200



PROGETTO ILLUMINAZIONE PARCO scala 1:500

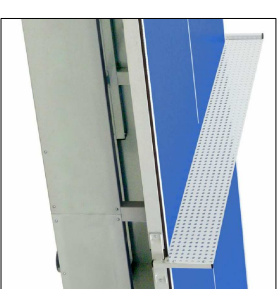
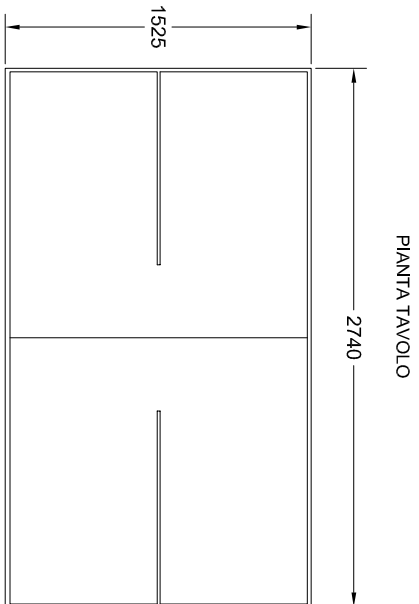
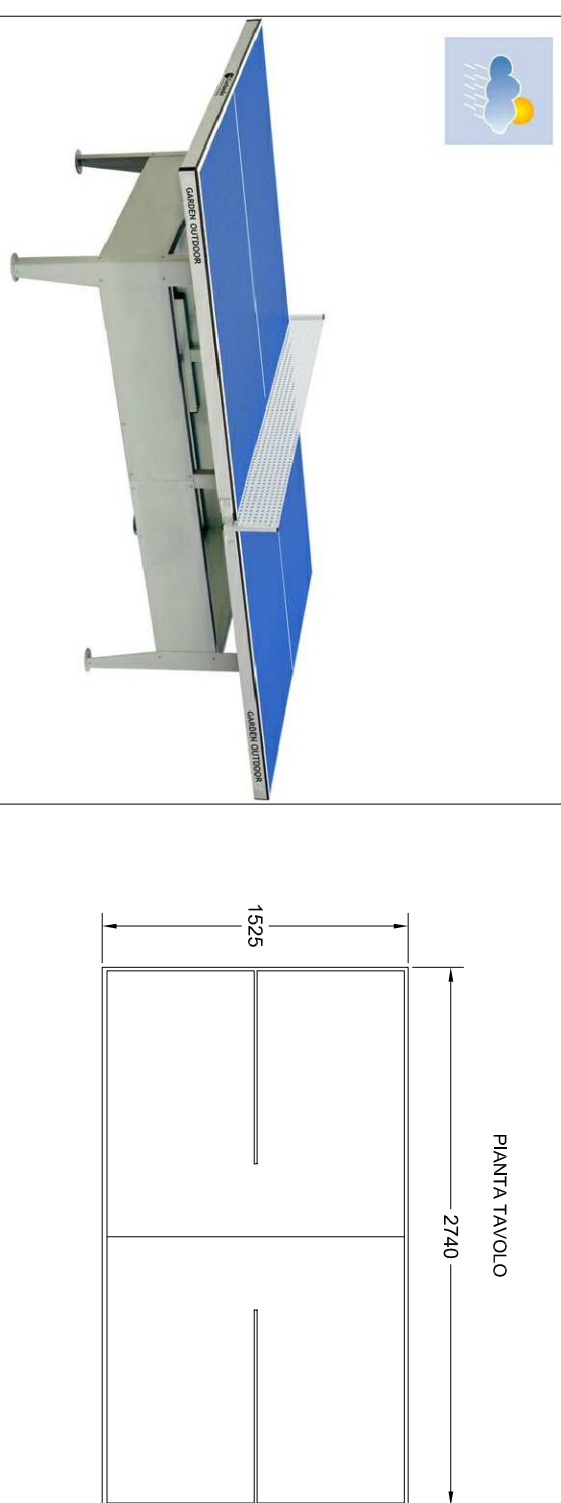


Pensilina per attesa autobus "Nizza 2010"



## PARTICOLARE

### Particolare tavolo da PING PONG



RETTE METALLICA

VISTA LATERAL